



What's up with



Ellen O'Carroll

Associate Technical Project
Manager

✉ eocarrol@redhat.com

[m] [@eocarrol:matrix.org](matrix://@eocarrol:matrix.org)

Julia Bley

Associate Manager

✉ jbley@redhat.com

[m] [@jbley:matrix.org](matrix://@jbley:matrix.org)



What does CPE stand for?



A: **C**ool **P**eople **E**nvironment 🕶️

B: **C**offee & **P**izza are **E**ssential 🍕☕

✓ C: **C**ommunity **P**latform **E**ngineering 🌐

D: Screw abbreviations 😡

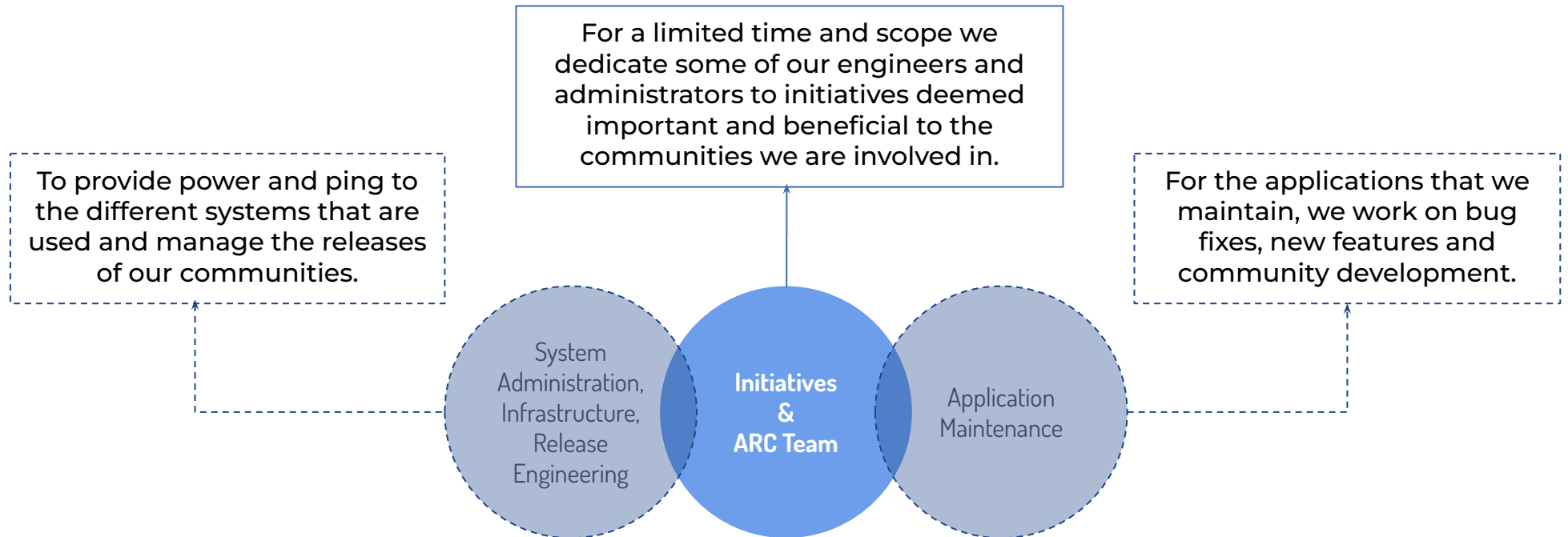
Community Platform Engineering



The [Community Platform Engineering Team](#) (CPE) is a Red Hat team dedicated to the [Fedora](#) and CentOS Stream projects where they contribute to the infrastructure and release engineering.



Community Platform Engineering





**We grow for you -
Our newest addition is... ?**



A: Kermit & Miss Piggy 🐸💕

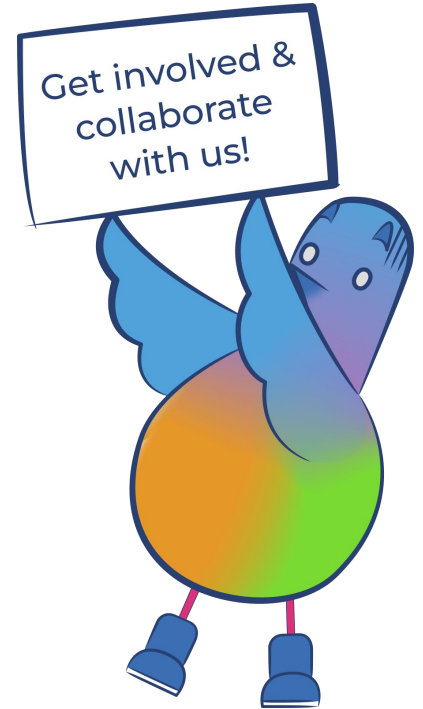
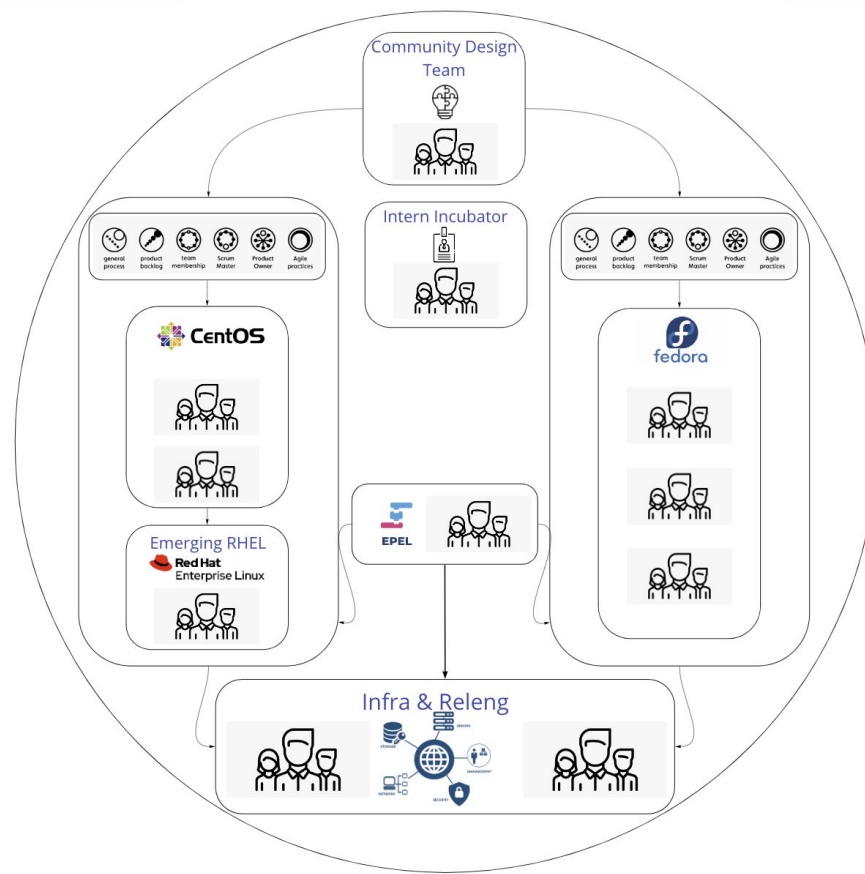
B: Me!!!! 🎮

✓ C: Community Design Team 🎨

D: I am still counting... 🖐️

CPE Teams

- Community Design Team
- CentOS & Emerging RHEL
- [EPEL](#)
- ARC
- Initiatives
- Infra & Releng
- Intern Incubator





**Take a guess:
How many kilometers / miles do
you need to cover at least to see
all of us?**



A: Just a call away 🖐️

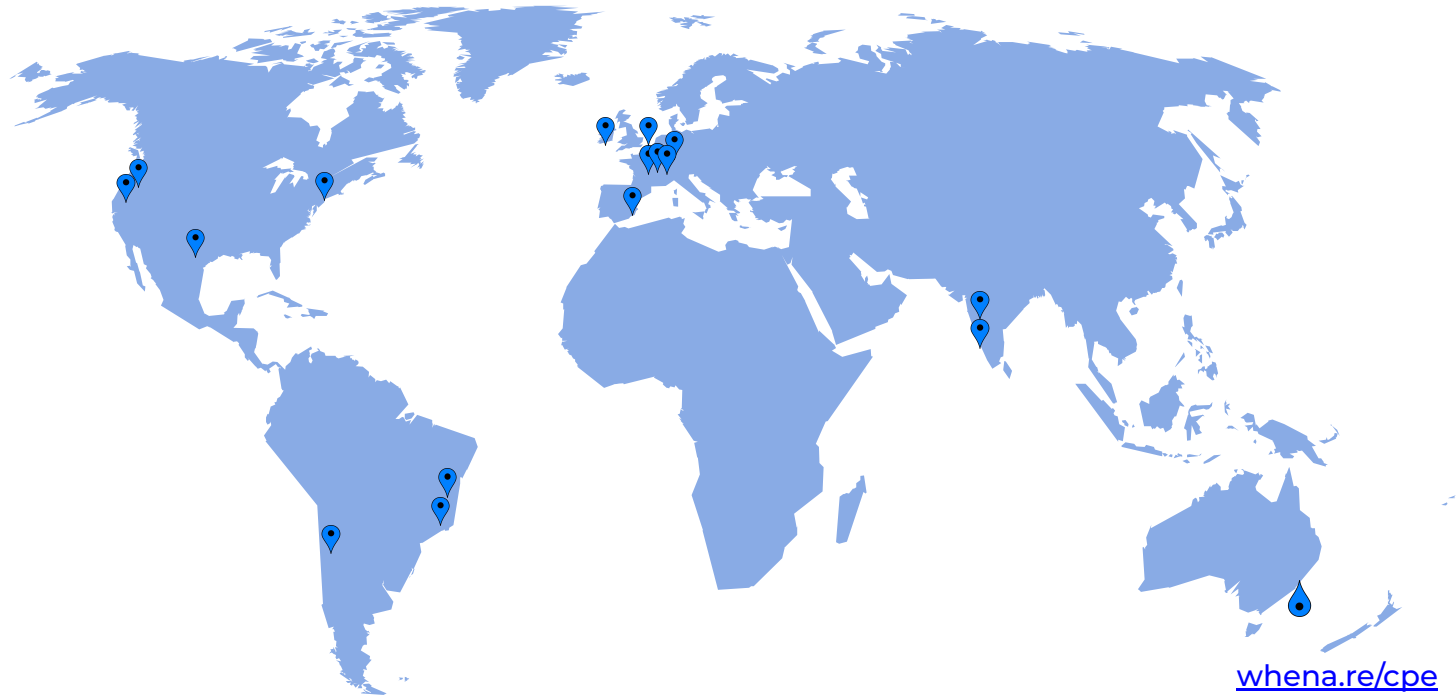
B: To the moon and back 🌕🌍

C: 236 pizza deliveries and a soda (== forever)



D: approx 44,000 km / 37,340 miles 🌐

The world in CPE terms



- 39 Team members
- 11 Interns
- 10 Women
- 8 Timezones
- 12 Countries
- 14 Languages (at least)



How to get in touch with us?



✓ A: Chat, email, ticket... omg options 😱

B: Smoke signs 🔥

C: Who says I want to get in touch? 😐

D: Send a postcard 📮



Your resources to connect

IRC (Libera Chat):

#redhat-cpe

#fedora-admin

#fedora-apps

#fedora-design

Initiative proposals:

pagure.io/cpe/initiatives-proposal

Infrastructure issues

pagure.io/fedora-infrastructure

pagure.io/centos-infra

[Weekly community updates](#) 🎉🎉🎉



Let's talk numbers -

**How many tickets did we close
in the last 12 months?**



A: too many to count 

B: What's a ticket? 

C: None 

 D: 1796

What are we doing with your tickets?



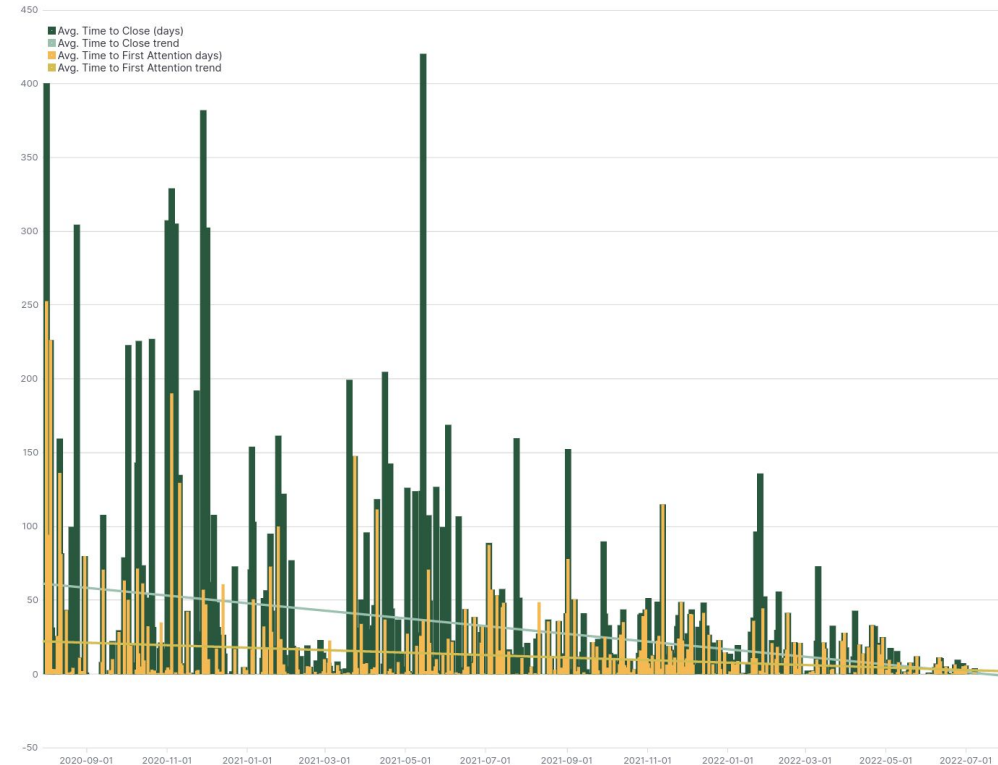
Your ticket

- Reviewed & categorized every day (morning & afternoon)
- Assigned or more details required
- Closed

Some 365 days facts* :

- 1796 tickets have been closed in the past 12 months
- 4.92 tickets / day or 34.44 / week**
- 6 ended up on the initiative board
- 1426 days was the longest open ticket we closed

Avg. Time to Attend and Close Tickets



* August 01, 2021 - July 31, 2022

** increase by 12 tickets // 54% to last year's Nest (22 tickets/week)



**Our initiatives for you:
How many initiatives did we
complete since last Nest?**



A: What's an initiative? 😞

✓ B: 7

C: 1 💪

D: I am still celebrating the tickets 🎉

Initiatives



Stakeholders

- Fedora Community
- CentOS Community
- CPE Team Members
- CPE Management
- RHEL Business units

Projects

- ✓ Metrics for Apps in Openshift
- ✓ Datanomer Datagrepper V2
- ✓ Fedora CoreOS Pipeline Migration
- ✓ CentOS Duffi CI
- ✓ Image Builder
- ✓ Bodhi
- ✓ Flask OIDC Rewrite
- ✓ Automate packaging of Infra apps in Fedora
- ✓ DNF Countme contd. (ARC) → *starting in Oct*
- ✓ FMN Replacement (ARC)

Currently in progress:

- FMN Replacement
- CommuniShift
- Badges (ARC)
- Kernel Test App (ARC)



Initiatives

An initiative is briefed in

Initiative ticket is filed in our repo▶ Review with Product Owner and team against mission statement

Quarterly Planning

Projects are investigated by ARC▶ With a +1, It goes into backlog for prioritization

Scoping Process Begins

Initiative reviewed by wider CPE Team for technical requirements

.....▶ Deliverables are established based on ARC Team investigation

.....▶ Stakeholders are informed of what team expects to be able to achieve

Initiatives are run on quarterly cycle !



How do you feel about CPE now?



- ✓ A: Pro - I can distinguish between a toad and a frog 🎊
- ✓ B: Pro - There are links. I can click them. 📌
- ✓ C: Pro - I am already chatting with you. 💬
- ✓ D: Pro - Hang on... I have more questions ?



We want to
collaborate with YOU!!!

Join the discussion
and collaborate on
Fedora badges.





Thank you and reach out!

Ellen O'Carroll

Associate Technical Project
Manager

✉ eocarrol@redhat.com

[m] [@eocarrol:matrix.org](matrix://@eocarrol:matrix.org)

Julia Bley

Associate Manager

✉ jbley@redhat.com

[m] [@jbley:matrix.org](matrix://@jbley:matrix.org)